

# INCHEON NATIONAL UNIVERSITY



Introducing **Hwaetbul**,  
the mascot of Incheon  
National University





To the Future! To the World!

**Incheon  
National University**

A university that creates opportunities to reach the world through education, service, and sharing!  
A university moving toward the future and the world with a spirit of challenge, leading change across the globe!  
That is Incheon National University.

# Go Future! Go Global!

## Contents

President's Message	06
Vision	08
History	09
Organization	10

## Go Future!

Our challenge goes on

Scholarship System	14
Career & Employment Support Programs	18
Specialized Education	20
Global Education	22
Research Institutes	28
Government-Funded Projects	30

## Go Global!

Player with infinite potential

College	34
<12 Colleges / 2 Independent Divisions>	
Graduate School	48
<Graduate School / Specialized / Special Graduate Schools>	

Auxiliary Organizations / Affiliated Organizations	52
Industry-Academy Cooperation	54
Campus	58

# INCHEON NATIONAL UNIVERSITY

**that resonates with the community and leads the times**

Incheon National University has continuously evolved over the years. Founded as a private university in 1979, it became a municipal university in 1994 and was transformed once again into a national university corporation in 2013. Through constant change and innovation, INU has become one of the fastest-growing universities in Korea.

Today's rapidly changing technological landscape and socio-economic structure demand new types of talent and fresh perspectives. In response, INU is embracing another wave of transformation and innovation to emerge as a university that leads the future.

By expanding our curriculum and teaching methods to enhance the breadth and depth of learning, we will become an innovative university that nurtures and draws out each student's potential. By strengthening fundamental academic disciplines to build a solid scholarly foundation, we will become a research-centered university that conducts cutting-edge research in advanced fields. By reinforcing our role as a regional platform for education and research, we will become a leading university that resonates with citizens and grows alongside the local community.

INU has long cultivated a culture of open dialogue, where members of the university freely exchange ideas and diverse perspectives are respected. Building on this foundation, we aim to become a vibrant academic community where research, education, and service thrive in a virtuous cycle.

We sincerely ask for your continued support and encouragement as Incheon National University grows into a driving force for national and regional development. Thank you.



Incheon National University **President In Jae Lee**

# Soaring into the new World, Incheon National University

Incheon National University is developing varied and specialized projects to become one of Korea's top 10 universities and one of the world's top 100 universities. We will enhance our university's competitive edge through the systematic and unique operation of six strategic goals: education, research and industry cooperation, social contribution, globalization, business management and infrastructure, and specialization.

## Strategic Goals

- 1 Education**  
 Establish a sustainable education brand by responding to the signs of the times and preparing for the future by innovating the education system
- 2 Research & Industry Cooperation**  
 Establish a research and industry cooperation brand with high added value by settling a performance-based research system with a virtuous cycle that creates social values
- 3 Social Contribution**  
 Establish a dynamic brand centered around INU that emphasizes the university's integration with the local community
- 4 Globalization**  
 Establish a global brand that creates synergy between education and research
- 5 Business Management & Infrastructure**  
 Establish an organizational brand of meeting challenges together by reorganizing business management and infrastructure to communicate with members
- 6 Specialization**  
 Establish a multi-school system convergence ecosystem between specialized areas

## Performance Goals

- ① Reinforcement of capability-focused convergence education system and programs  
 ② Settling online and offline integration educational system  
 ③ Empowerment of support infrastructure for students' wellbeing and foundations for attracting excellent talent
- ① Establishment of a sustainable collective research system  
 ② Commercialization of exemplary research performance and reinforcement of industrial value creation foundations  
 ③ Reorganization of operational foundations to grow as a globally-recognized research university
- ① Expansion of the university's social contribution  
 ② Establishment and promotion of a platform that facilitates companionship with the local community to solve local issues  
 ③ Empowerment of lifelong education and companionship with the local community
- ① Strategic establishment of a global network and promotion of global exchange  
 ② Establishment of a global platform to consistently reinforce competitive power in the global community  
 ③ Expansion of attracting international students and operation of tailored programs
- ① Establishment of a stable organization operation system and implementation of a fair and reasonable personnel system  
 ② Establishment of a campus that focuses on future development  
 ③ Operation of a sustainable finance operation system and reputation-enhancing programs
- ① Fostering innovative talent in specialized fields through convergent education  
 ② Creation of globally renowned research performance in specialized fields  
 ③ Spread of specialization performances

# Endless Challenge Through Change and Innovation

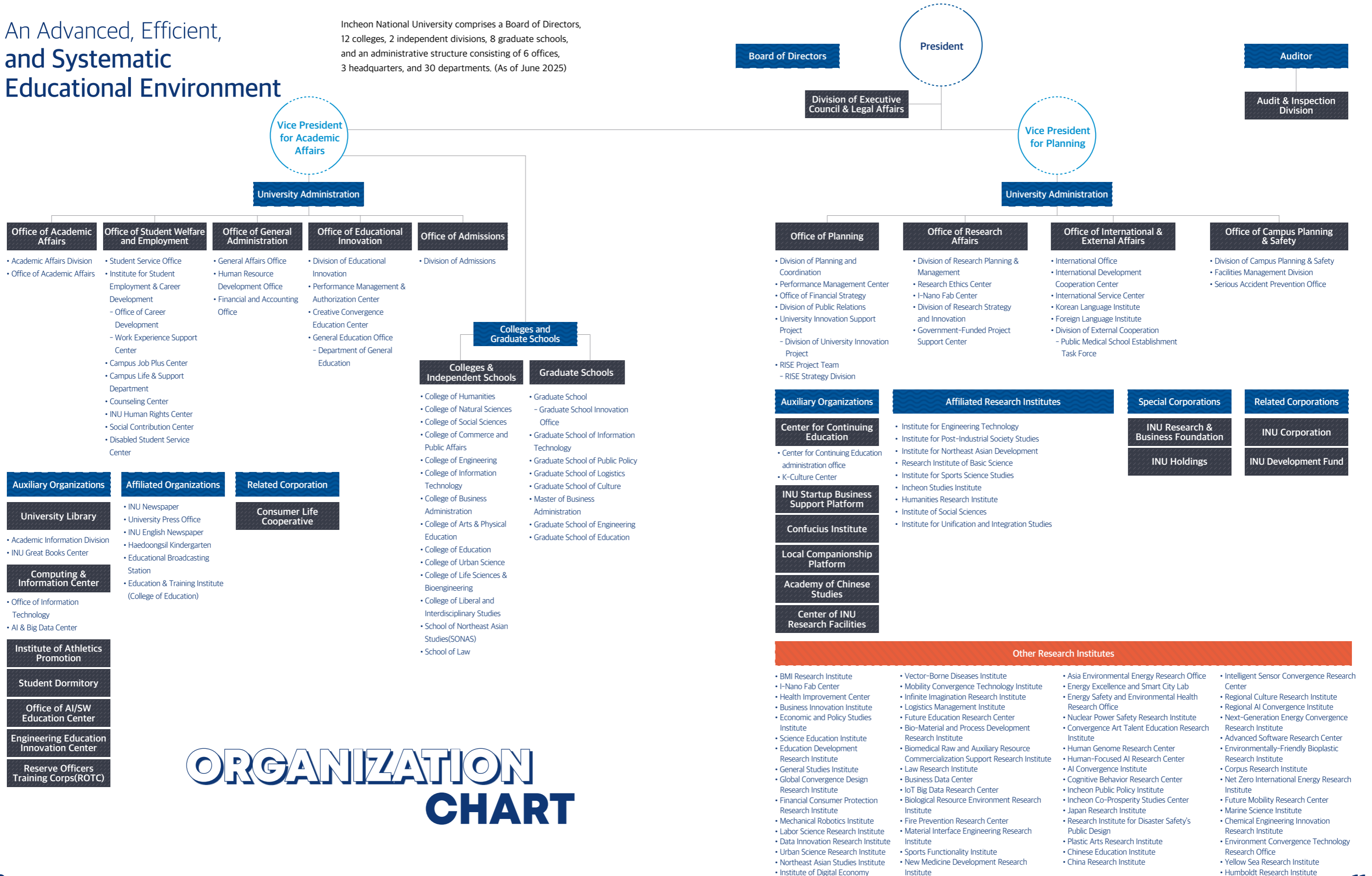
Our spirit of challenge has grown stronger over time. From a single college to a comprehensive university, from a municipal institution to a national university, Incheon National University stands as a testament to continuous transformation and growth.



## ENDLESS CHALLENGES of CHANGE and INNOVATION

# An Advanced, Efficient, and Systematic Educational Environment

Incheon National University comprises a Board of Directors, 12 colleges, 2 independent divisions, 8 graduate schools, and an administrative structure consisting of 6 offices, 3 headquarters, and 30 departments. (As of June 2025)



# ORGANIZATION CHART

# GO FUTURE

Our challenge goes on !

The bold and inspiring pursuit of greater heights by INU students continues.

## Global Education

Global Programs  
International Academic Exchange Agreements  
International Education Support

## Scholarship System

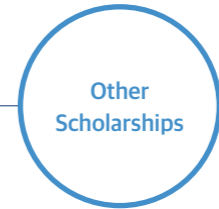
Career & Employment  
Support Programs

## Specialized Education

College Scholarships

# The Reliable Force Backing up Your Future Scholarship System

To support INU students' limitless growth, a wide range of reliable scholarship programs guide students to the right path with the light of hope.



**Academic Excellence**

- Students who completed at least 17 credits (15 credits for seniors) in the previous semester with a GPA of 3.0 or higher and are recommended by the Dean

**Foreign Language Excellence**

- Grade A: TOEIC 950 or higher / TOEFL iBT 112 or higher
- Grade B: TOEIC 900 or higher / TOEFL iBT 105 or higher

**Science & Engineering Talent Development**

- Students majoring in science and engineering with a GPA of 3.5 or higher in the previous semester and recommended by the Dean

**Rolling Admission Excellence**

- Course Work Excellence: 12 people (6 each from humanities and natural sciences)
- Regional Balance: 6 (3 each from humanities and natural sciences)
- Self-Recommendation Admission: 14 (7 each from humanities and natural sciences)

**International Commerce and Asian Studies**

- School of Northeast Asian Studies (SONAS)
  - For newly enrolled students(enrollment upon first admission) of the International Commerce and Asian Studies, tuition fees in entrance semester are provided in full
  - The top 50% of enrolled students according to their overall grades for the previous semester are provided with tuition fees in full(students admitted in the 2024 and 2025 academic years)
  - The top 20% of enrolled students according to their overall grades for the previous semester are provided with tuition fees in full(students admitted in or after 2026 academic year)

**Top-Ranked Regular Admission**

- Top-ranked admitted student at the college level (General Admission)
- Top-ranked admitted student at the department/major/unit level

**Incheon National University Love (Challenge)**

- Students with challenging living conditions who received a recommendation from the dean

**Incheon National University Love (Passion)**

- Students who strive to develop themselves in various areas, such as academics, volunteering, and extracurricular activities, and received a recommendation from the dean

**Merit**

- Student who is acknowledged to have brought honor to the university or country
  - Award winner in contests of various sizes in and out of Korea (individuals and groups)
  - Winners of annual spring literary contests held by Seoul's major daily newspaper companies, students with recommendations from prestigious literary magazines

**Public Service Examinations, Etc.**

- Type 1 : Students who pass 5th-Class Public Servant Examinations, Diplomat Candidate Examinations, Higher Civil Service Examination (legislations, court, administration), CPA, or Patent Attorney Examination
- Type 2 : Students who pass tax accountant, customs agent, certified public appraiser, certified labor attorney, or judicial scrivener examinations

**Patriotism**

- Children of persons of distinguished service to state and those at similar levels

**National Scholarship (On-Campus Administration)**

- Students who pass eligibility review for the Korea Student Aid Foundation national scholarship

**School Council Executive**

- Students deemed to have greatly contributed to the school council's activities who received a recommendation from the Director of the Office of Student Welfare and Employment or the dean of the college

**Special Program for International Students**

- Students enrolled through foreign admission types
  - Academic Excellence Scholarships provided according to previous semester's grades
  - Finance Scholarships provided according to income

**Family Love**

- 1 student from a family whose sibling is an enrolled (registered) undergraduate student of INU (provided to 2 students if 3 or more siblings are enrolled)

**Athletic Excellence**

- Students who placed within the top three in national competitions (e.g., badminton and shooting), placed within the top two at the National Sports Festival, or have been selected as members of the national or youth national team.
- Registered members of the university soccer team who placed first or second in national competitions, or advanced to the semifinals or quarterfinals of national tournaments.

**Companionship**

- Integrated Disability Grade: Student with severe disabilities

**Others**

- North Korean defectors, students with volunteer work record, Unipoint, Overseas Koreans Cooperation Center invitees, recommendations from an ambassador or honorary consul in Korea, INU Miraero Scholarship, INU Didimdol Scholarship (I, II), INU Beotimmok, etc.





## Graduate School Scholarships

### Full Tuition Scholarship

#### Integrated Bachelor's and Master's Program

- Applicants must have a minimum undergraduate GPA of 3.3 and a recommendation from their academic advisor.
- Program duration: 3 semesters
- Must maintain full-time enrollment and a GPA of 3.5 or higher each semester

#### Master's and Doctoral Programs

- Applicants must have a minimum GPA of 3.0 (for master's) or 3.5 (for doctoral) from their previous program and a recommendation from their academic advisor.
- Program duration: 4 semesters
- Must maintain full-time enrollment and a GPA of 3.5 or higher each semester

#### Integrated Master's-Doctoral Program

- Applicants must have a minimum undergraduate GPA of 3.5 and a recommendation from their academic advisor
- Program duration: 8 semesters
- Must maintain full-time enrollment and a GPA of 3.5 or higher each semester

### GA (Graduate Assistant) Scholarship

#### GA Scholarship

- New students with a minimum GPA of 3.0
- 50% of tuition is covered during the mandatory enrollment period
- Must maintain full-time enrollment and a GPA of 3.5 or higher each semester

### Full Tuition Scholarship for International Students

#### Master's and Doctoral Programs

- Applicants must have a minimum GPA of 3.0 from their most recent program and a recommendation from their academic advisor.
- Program duration: 4 semesters
- Must maintain full-time enrollment and a GPA of 3.5 or higher each semester

#### Integrated Master's-Doctoral Program

- Applicants must have a minimum GPA of 3.0 from their most recent program and a recommendation from their academic advisor.
- Program duration: 8 semesters
- Must maintain full-time status and a GPA of 3.5 or higher each semester

### Special Scholarship for International Students

#### New Students

- 85% of tuition covered
- For those with a GPA of 3.0 or higher from their most recent program
- 50% of tuition covered
- For those with a GPA below 3.0 from their most recent program

#### Current Students

- Tuition support of 50%, 60%, or 85% — based on GPA from the previous semester

### Research Scholarship

#### Research Scholarship

- Awarded to students enrolled in the current semester who are the lead author of a published paper (first author or corresponding author)
- The paper must rank within the top 5-25% of JCR.
- Ranking is determined based on the latest JCR Year's Journal Impact Factor.

#### SURE LAB Scholarship

- To nurture graduate students and doctoral-level researchers as the next generation of scholars, scholarships are awarded to graduate students who participate in lab-based research activities (lab-building program).
- Graduate school admission scholarships are awarded to outstanding students from INU who demonstrate academic excellence.

### Other Scholarships

#### Service Scholarship

- Executive members of Graduate Student Council in the General Graduate School (KRW 1.6 million per semester during the mandatory enrollment period)

#### Scholarship for Partner Institutions

- Employees of institutions that have signed an educational cooperation agreement with the INU
- 50% of tuition covered for the current semester

#### Embassy Recommendation Scholarship

- Those recommended by ambassadors to Korea
- Full tuition coverage for the current semester

#### Global Korea Scholarship

- Those who are selected by Global Korea Scholarship (GKS)
- Covers tuition exceeding KRW 5 million provided by the government

#### Scholarships for Overseas Koreans

- Those recommended by the Overseas Koreans Cooperation Center
- New students: Minimum cumulative GPA of 3.0
- Current students: Minimum GPA of 3.5 each semester

#### Scholarship for Faculty from Foreign Universities

- For international students who are faculty members at foreign universities (two-year programs or longer)
- 60% of tuition covered

#### Work-Study Scholarship

- Eligibility: Graduate students capable of assisting with academic and administrative duties

# Career & Employment Support Programs

By establishing STARinU, a student competency management system that provides one-stop support for career planning, work experience, and employment from enrollment to job placement, INU offers comprehensive information to help students make informed career decisions, successfully develop their professional experience, and secure employment. Tailored programs are designed to meet students' individual needs.

Website: <http://job.inu.ac.kr>



## General Field Practice/Work-Study Program

Program Name	Program Description	Duration
General Field Practice (Internship)	A program that allows students to apply major-related knowledge acquired at the university in real corporate settings. Through hands-on experience, students explore career paths from a practical perspective and gain diverse field experience across various organizations.	Regular semesters (Spring & Fall) and seasonal semesters (Summer & Winter)
Work-Study Program	A structured program designed to cultivate job-ready professionals. Companies recruit students (apprentice employees) and provide one year of systematic training based on the National Competency Standards (NCS) at the company or university. Upon completion, students are evaluated, which may lead to full-time employment and recognition of national certifications.	1 year

## Career&Employment Curricular Programs

Year	Category	Course Title	Program Description	Term Offered
All years		INU Leadership Special Lectures	Cultivating globally competitive leaders through special lectures delivered by industry experts and distinguished figures.	Spring & Fall Semesters
		Introduction to Marine Police Studies	Acquiring foundational academic knowledge related to the Korea Coast Guard and enhancing competencies through field training.	
		Career & Entrepreneurship Seminar	A career planning course designed to build foundational competencies for employment and entrepreneurship, including résumé writing and business plan development.	
Sophomore-Senior		Career Roadmap	Supporting systematic career planning through self-assessment and exploration of industries and job functions.	
		Understanding the National Competency Standards (NCS)	A course to understand NCS and NCS-based recruitment, and to develop the competencies required at each stage of the hiring process.	
		Understanding Public Service Careers	Providing practical insights into public sector careers, helping students assess suitability and develop preparation strategies.	
Senior Year		Core Employment Strategy Special Lectures	Strengthening practical job-search competencies based on current recruitment trends, covering industry and company analysis, application preparation, and interview strategies.	

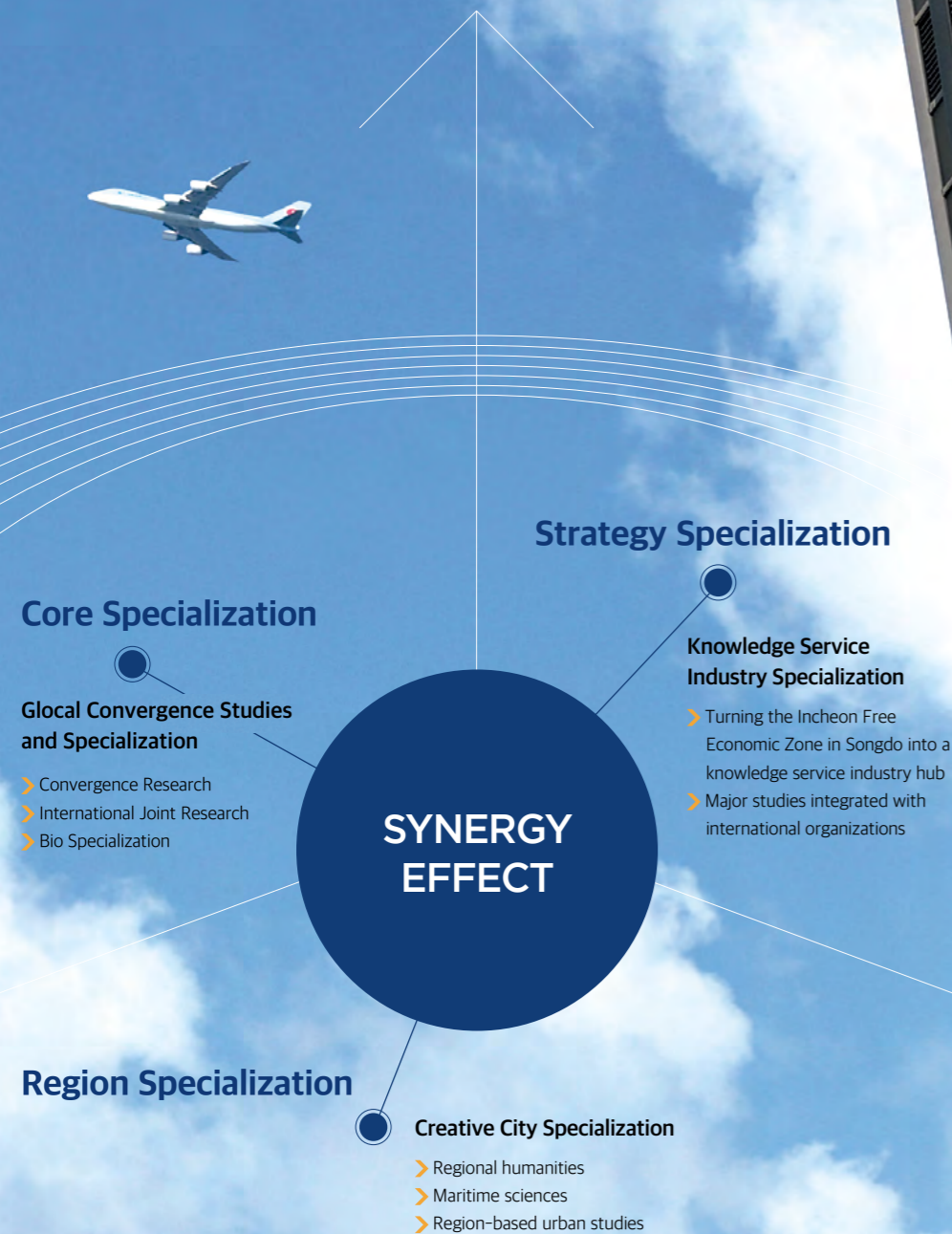
## Career& Employment Non-Curricular Programs

Category	Program Name	Program Description	Duration	
<b>S</b> Understanding Myself (Start your Career)	[Major] First Year Seminar (Exploring Double, Minor, and Interdisciplinary Majors)	Trial Program for Other Departments for Students Pursuing Double, Minor, or Interdisciplinary Majors	Mar-May / Sep-Nov	
	[Career] Career Design Camp	1:1 Career Coaching, Career Planning Camps, and Career Talk Concerts with Alumni Professionals	Mar-Feb	
	[Career] Career Solution Workshop	Special Lectures and Small-Group Coaching to Address Career Planning Challenges	Apr-Jan	
	[Career] On-site Career Planning	Training on Leveraging STARinU for Effective Career Planning	Mar-Dec	
	[Career] Freshman Career Exploration (Fresher Universe Week)	Freshman Universe Week: Customized Career Exploration for First-Year Students	Apr-Nov	
	[Career] Employment Support for Graduate Students	Career & Employment Competency Enhancement Programs and Counseling for Graduate Students	Mar-Feb	
	[Career] Enhancing Career Competency for Lower-year Students	Major-Specific Career Exploration Programs for Underclassmen	Apr-Dec	
	[Career] Online Career Assessment	Personality and Career Interest Assessments for Self-Discovery and Career Exploration	Mar-May / Sep-Nov	
<b>T</b> Finding What I Want to Do (Target your Goal)	[Online] Job Exploration	Step One to Career Clarity & One-Hour Live & On-Demand Job Insight Lectures Delivered by Industry Professionals	Mar-Feb	
	[Online] Mentoring with Industry Professionals	Online Mentorship Matching with Industry Professionals for Career & Employment Feedback	Mar-Feb	
	[Job Essentials] Job Mentoring with Industry Professionals	Enhances job understanding through industry professionals' experience and supports structured career planning	Apr-Jan	
	[Job Essentials ①] Job Seminar with Industry Professionals	Industry and Career Path Exploration to Discover Your Best Fit	May/Nov	
	[Advanced Job Study ②] Job Boot Camp with Industry Mentors	Job Experience Sharing, Real-World Assignments, Presentations & Feedback from Professionals and Alumni	Mar-Feb	
	[Practical Job Prep ③] Elite Resume & Interview Clinic	Specialized Coaching for Job Applications and Career Success by Role	Mar-Feb	
	[Self-Directed] Major-related Employment Clubs	Career-Focused Clubs to Strengthen Major Competencies and Achieve Employment Success	Apr-Jan	
	[Job Competency] Certificate & Professional Skills Training	Certification Preparation and Essential Job Skills Training	Mar-Feb	
	[Job Competency] Support for On-demand Corporate Hiring	Customized Job Search Skills Training (Personal Statements, Interview Simulations, etc.)	Mar-Feb	
	[Job Competency] Regional Talent Grade 7 Civil Service Prep	Nomination & Acceptance Support for Level-7 Regional Talent Recruitment (Ministry of Personnel Management)	Apr-Feb	
	[Job Competency] Guest Lectures by Working Professionals	Corporate & Career Special Lectures by HR Professionals	Apr-Feb	
	[Job Competency] Job Analysis Contest	Self-Directed Job Analysis & Presentation for Deeper Role Understanding	Jun/Dec	
	[Job Competency] Job Portfolio Contest	Pre-Training → 1:1 Matching → Job Final Competition Program	Sep-Oct	
	[Job Competency] Intensive Vacation Job Study Groups	Role-Specific Study Groups for Employment Achievement	Apr-Jan	
<b>A</b> Preparing for Graduation and Employment (Activate your Competency)	[Job Competency] K-Digital Training	Government-Sponsored Remote Training Programs in Basic Coding & Job Skills	Jun-Aug/ Dec-Feb	
	[Job Competency] Public Enterprise Prep Class	Intensive Preparation Program for Public Sector Recruitment (NCS, Written Exams, Interviews)	Mar-Feb	
	[State Exam] Sunyewon (National Exam Prep Class)	Study Spaces & Financial Support for National & Civil Service Exam Candidates	Mar-Feb	
	[Online] Company Reviews	Career Exploration & Job Prep Information Powered by Professional Reviews & Corporate Data	Mar-Feb	
	[Online] Aptitude Test Lectures	Aptitude & NCS Preparation for Major Corporations	Mar-Jan	
	[Online] AI-based Customized Service (Resume & Interview)	AI-Based Personal Statement Analysis, Mock Interview Practice & Feedback	Mar-Feb	
	[Graduates] 2-Month New Employee Success Challenge	Step-by-Step Employment Support Programs for Unemployed Graduates	Mar-Dec	
	[Graduates] Career Camp & 1:1 Resume/ Interview Consulting	Personal Statement & Interview Coaching with Professional Editing	Mar-Dec	
	[Graduates] HR Manager Talk Concert	Interactive Lectures on Recruitment Trends & Practical Job Strategies by HR Managers	Jul, Dec	
	[Graduates] Job Mentoring with Alumni	Alumni Mentorship Program by Major & Career Field	May, Sep	
	[Hub] Broadcasting & Media Talent Nurturing Project	Broadcast Industry Professional Training & Employment Support Program	May-Aug	
	[Hub] IT Developer Training Course	IT Developer Training Program Including Silicon Valley Tech Bootcamp	Sep-Feb	
<b>R</b> Entering the Job Market (Reinforce your Skill)	[Job Matching] Campus Recruiting	On-Campus Corporate Recruitment Information Sessions	Year-round	
	[Job Matching] Campus-Referral Hiring	Exclusive Recruitment Postings for Companies Seeking Incheon National University Talent	Year-round	
	[Job Matching] Career & Job Fair	Regular Networking & Recruitment Events with Multiple Companies and Professionals	May/Nov	
	[Job Matching] Future-Tomorrow Work Experience Program	Field-Based Work Experience Programs to Strengthen Practical Competencies	Mar-Feb	
	[Job Matching] National Employment Support Program	Government-Supported 1:1 Career Counseling & Employment Assistance with Stipend Benefits	Mar-Feb	
	[Internship] Workplace Etiquette Onboarding	Pre-Internship & Pre-Employment Onboarding Program	Mar-Feb	
	[Hub] Off-Campus Career Fair	Guided Participation in Off-Campus Job Fairs with On-Site Matching Support	Mar-Feb	
	[Graduates] Job Matching Day	Pre-Training → Job Fair Participation → Post-Program Career Management	Jun, Oct	
		[Promotion] College Outreach Service	College-Level Visiting Consultations & S.T.A.R Program Introduction	Sep-Nov
		[Psychology] Mental Wellness for Job Seekers	Workshops to Overcome Psychological Barriers to Career & Employment	Mar-Dec
<b>in</b> Infrastructure (Infrastructure)	Employment Success Story Contest	Empowering Students' Career Readiness Through Alumni Stories of Failure, Resilience, and Success	Apr-Aug / Sep-Feb	

※ The program is open to current students, graduate students, alumni, and local youth.

# Reaching Out to the World: Special Companionship

The local community and Incheon National University started working together to foster a competitive edge on the global stage



## Core Specialization

### Glocal Convergence Studies and Specialization

#### 1. Applied Technology Convergence and Bio Specialization

- Implementation of applied technology convergence and specialization centered around the College of Engineering and College of Information Technology
- Bio field specialization implemented centered on the College of Life Science & Bioengineering
- Bio field specialization implemented based on BT and NT

#### 2. Establishment of foundations for the global convergence cluster

- Establishing a global convergence cluster that integrates research performance with regional industries through joint international studies in areas such as BN and NT, one of the core industries of the Incheon Free Economic Zone in Songdo
- Implemented by linking with domestic and foreign companies with residency in the Incheon Free Economic Zone in Songdo
- Contributes to economic revitalization by sharing R&D performance with regional SMEs

## Strategy Specialization

### Knowledge Service Industry Specialization

#### 1. Leading the transformation of Incheon Free Economic Zone in Songdo into a knowledge service industry hub

- Implementation of knowledge service industry specialization for the creation of convergence knowledge service industries and improvements in added value of service industries linked with ICT
- Promotes specialization by integrating with international organizations with offices in Songdo, such as GCF and WB
- Fostering specialized experts by opening major studies with links to international organizations and knowledge service industries

#### 2. International trade and logistics specialization

- Implementation of international trade and logistics specialization centered on the School of Northeast Asian Studies and the Graduate School of Logistics

## Region Specialization

### Creative City Specialization

#### 1. Regional Humanities Area

- Founded the Academy of Chinese Studies as a part of the China Project; fosters the best experts on China through education and research specialized in Chinese studies
- Implements regional studies (Incheon Studies) and East Asian urban humanities centered on the Incheon Studies Institute
- Opens various liberal arts lectures for locals as a part of the Regional Humanities Renaissance Project centered on the College of Humanities, contributing to the enhancement of the liberal arts capabilities of locals

#### 2. Maritime Science Area

- Applies the regional characteristics of Incheon, a maritime city, and fosters specialized maritime science areas (maritime bio, marine environment, maritime leisure sports)

#### 3. Region-Based Urban Science Areas

- The "Creative City Incheon" project, centered at the College of Urban Science, strives to improve the quality of life for Incheon residents and make the city a more appealing place to live.

# Global Programs

Expand your vision, experience more, and walk the path to becoming a global leader at Incheon National University.

<https://global.inu.ac.kr>



## Outbound Exchange Program

INU's Outbound Exchange Program gives you the chance to study at top universities around the world for 6 months or a year. Expand your academic journal, earn transferable credits, and return with experiences that set you apart.

## Inbound Exchange Program

INU warmly welcomes students from our valued partner universities worldwide. Join us for a semester or a full year during spring or fall, and immerse yourself in a rich academic and campus life experience. The program offers credit transfer, cultural exchange, and comfortable dormitory living, all with school fees waived under mutual exchange agreements.

## Overseas Internship Program

To nurture future leaders, INU encourages students to embark on a transformative journey that addresses evolving social needs. Through our Overseas Internship Program, participants work with foreign businesses and social organizations for 6 months to a year, gaining hands-on experience and engaging in meaningful cross-cultural exchange.

## Buddy Program

Through our Buddy Program, international students from partner universities are matched with friendly INU student buddies who provide one-on-one support. From navigating campus to adjusting to life in Korea, your buddy will be there to help you settle in and make the most of your experience.

## International Student Support Committee (ISSC)

At INU, the ISSC brings students together through dynamic international exchange activities. From cultural festivals and campus tours to dedicated support services, these initiatives foster a truly global campus atmosphere. Students gain meaningful connections, celebrate diversity, and strengthen their cross-cultural communication skills.

## International Summer Program

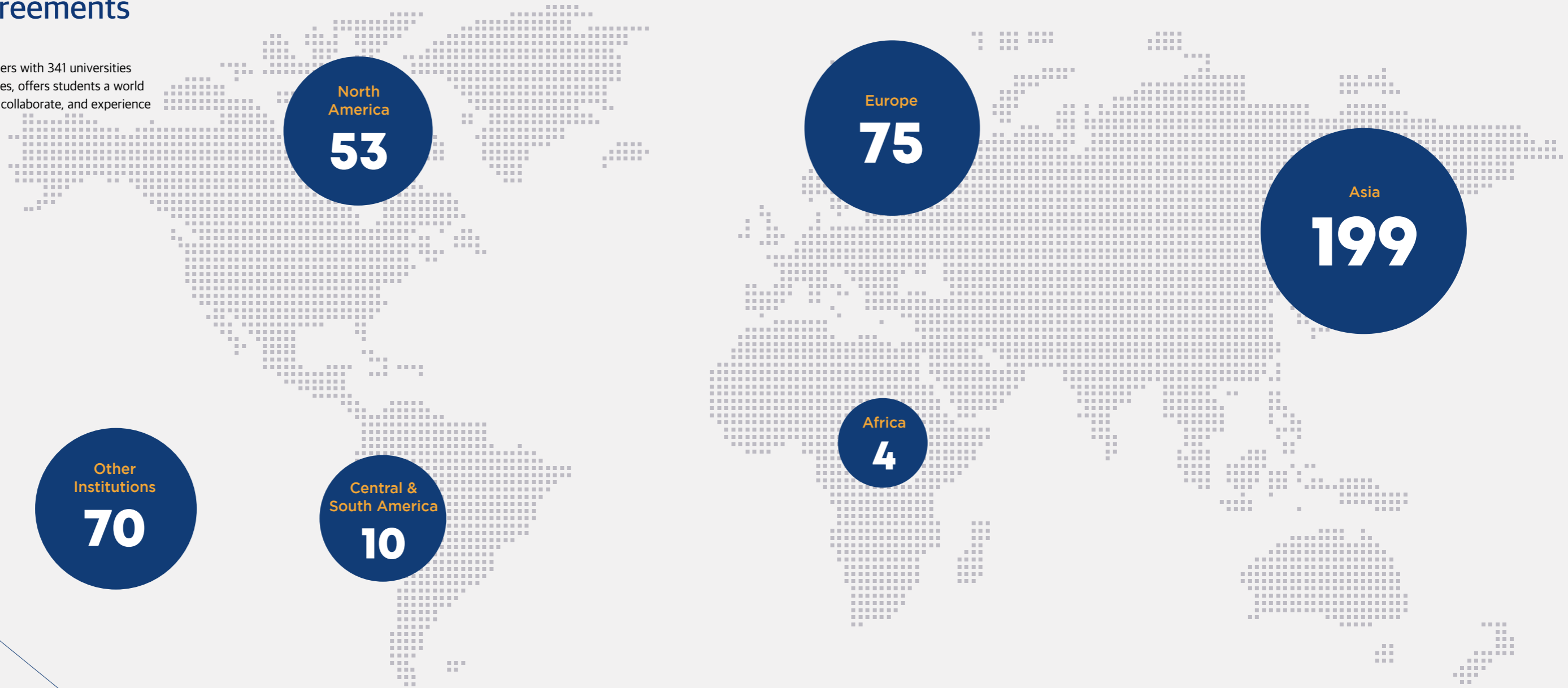
Every summer, INU opens its doors to students worldwide for a three-week International Summer Program. Learn from distinguished professors through an interactive course featuring teamwork, discussions, innovative teaching methods, while enjoying hands-on cultural experiences that bring learning to life.



# International Academic Exchange Agreements

Incheon National University partners with 341 universities and 70 institutes from 80 countries, offers students a world of opportunities to study abroad, collaborate, and experience diverse cultures.

※ As of Feb 28, 2025



 **80** Countries

 **341** Universities

 **70** Institutes



## International Service Center



To allow international students in our university to adapt to their lives in Korea and consistently focus on their academic affairs, the center provides support services in areas including visas, insurance subscription, Korean language education, Korean culture experiences, career experience, and counseling programs.

Website: <http://isc.inu.ac.kr>



### Korean Language Institute (INUKLI)

Established in February 2009, the Korean Language Institute conducts Korean training courses from levels 1 to 6 for foreigners. By combining Korean traditions with Korean pop culture, the institute runs various programs to allow anyone to learn Korean quickly as well as fully experience the culture and Korean wave unique to the country.

Schedule & Application Forms: <http://inukli.inu.ac.kr>

Course Periods: Spring Term (Mar.-May.), Summer Term (Jun.-Aug.)  
Fall Term (Sep.-Nov.), Winter Term (Dec.-Feb.)

### Foreign Language Institute

The institute provides various special lectures on foreign languages for enrolled students and Incheon locals.

Participants can enjoy the experience from anywhere around the world as well as enhance their foreign language skills through programs offered by Incheon National University's excellent professors and lecturers equipped with rich lecturing careers and experiences.

Course Application and Schedule: <http://lang.inu.ac.kr>



# Research Institutes

## Humanities Research Institute

The Humanities Research Institute was originally established in 1982 as the Institute of National Culture and was reorganized and expanded into its current form in 2001. Grounded in the spirit of liberation and freedom, communication and empathy, the Institute pursues transdisciplinary humanities, minority humanities, and intersectional humanities. It operates a variety of academic events and special lectures for the local community to share humanistic values with society.

Colloquia for the advancement of foundational scholarship, international cooperation programs, academic conferences, and thematic lectures on classical humanities and creative writing workshops for Incheon citizens promote scholarly exchange and communication while contributing to community-based knowledge sharing.

In addition, the publication of its registered academic journal *Inmunhak Yeongu* (人文學研究), the INU Humanitas Series, and the INU Translation Series *leo* (異語) contributes to the dissemination of research outcomes and the popularization of humanities scholarship.

In 2025, the Institute was selected for the Humanities and Social Sciences Research Institute Support Program funded by the National Research Foundation of Korea. Through this initiative, it plans to continue producing meaningful research outcomes that expand the horizons of humanistic inquiry and explore future transformative possibilities for the humanities in response to changing times.



## Incheon Studies Institute

The Incheon Studies Institute was established in 2002 to systematically study the social, cultural, and historical identity of Incheon, to examine the city's dynamism through interdisciplinary convergence in the humanities and related fields, and to present forward-looking visions for Incheon's future development. Its major initiatives include publishing and archiving academic research on the Incheon region, supporting research activities centered on Incheon, conducting research projects commissioned by national and local governments, and promoting education on Incheon's history and culture.

The Institute also regularly hosts academic seminars to facilitate in-depth discussion and expand the scope of Incheon Studies. In addition, it publishes the NRF-listed academic journal *Incheon Studies Research* and the monograph series *Incheon Studies Series*.

## Engineering Technology Institute

The Engineering Technology Institute was established in 1981 to contribute to the advancement of cutting-edge engineering industries and the development of related industrial science and engineering technologies. Its research faculty consists of full-time professors affiliated with the College of Engineering, the College of Information Technology, and the College of Urban Science.

Leveraging the excellent research personnel and advanced equipment within each department, the Institute conducts engineering research and problem-solving while leading the development of practical technologies through industry-academic collaboration with regional industries.

In addition, through public lectures, academic conferences, and seminars, the Institute provides researchers and graduate students with broad and in-depth professional knowledge, thereby contributing to regional and industrial development.

## Sports Science Institute

Established in 1982, the Sports Science Institute at Incheon National University conducts clinical and non-clinical research on physical activity and movement, muscles and cells, the central and peripheral nervous systems, the cardiovascular system, as well as cognition and psychology. Through this research, the Institute aims to: assess human health and functional capacity, enhance athletic performance, and provide diverse solutions for health promotion.

Through strategic expansion of human and physical infrastructure, the Institute has achieved significant accomplishments in research, talent development, and social contribution. As a leading core institute in applied sports science in Korea, it continues to strengthen its position while advancing toward greater specialization and academic distinction. Since 2014, the Institute has appointed 12 new full-time faculty members specializing in cutting-edge applied sports science, bringing the total number of full-time research personnel to approximately 20. An integrated research environment has been established to enable interdisciplinary and multidimensional collaboration within related academic fields. Over the past nine years, the Institute has invested approximately KRW 3 billion in research equipment and infrastructure, successfully securing numerous national research grants from organizations such as the National Research Foundation of Korea, the Korean Sport & Olympic Committee, the Ministry of Culture, Sports and Tourism, the Ministry of Health and Welfare, the Incheon Metropolitan Office of Education, and the Incheon Metropolitan City Sports Council.

Building on its strong research performance, the Institute has published more than 30 SCI-indexed papers annually since 2020.

Looking ahead, the Sports Science Institute remains committed to further strengthening its human and physical infrastructure, fostering practice-oriented professionals for socially vulnerable communities, and advancing the scientific development of sport.

## Basic Science Institute

The Basic Science Institute at Incheon National University was established in 1985 with the aim of contributing to the advancement of basic sciences and national industrial development through fundamental and applied research in the natural sciences, while cultivating highly skilled scientific and technological professionals. In February 1990, the Institute published its first volume of research papers in basic science. Since 2009, it has hosted an annual International Joint Symposium on Basic Science, strengthening its position as a global research institute. In 2016, it was designated as INU's first government-recognized core research institute in the science and engineering fields, and in 2020, it was selected as a military service-designated research institute, further contributing to the development of fundamental disciplines.

Through active research and educational collaboration among students, researchers, and faculty, the Institute has established a cooperative framework linking academia, industry, research institutes, and local communities. It aims to become a world-class hub research institute in the field of carbon neutrality.



## Unification & Integration Institute

The Unification & Integration Institute was established in 2018 with the goal of building a comprehensive academic institution and a university specialized in unification studies through focused research on peace and reunification on the Korean Peninsula. As an academic institute of a regional national university, it leads unification education, cultivates experts in unification studies, and contributes to the local community by proposing policies that reflect the geopolitical characteristics of Incheon, a border region.

## Social Sciences Institute

The Social Sciences Institute was established in 2012 to conduct interdisciplinary research encompassing diverse fields within the social sciences in response to the convergence-oriented society of the 21st century.

The Institute publishes the NRF-listed academic journal *Journal of Social Science* and organizes regular workshops, special seminars, and research methodology lectures to enhance researchers' capabilities and promote interdisciplinary exchange in the field of social sciences.

## Post-Industrial Society Institute

The Post-Industrial Society Institute is a research institution dedicated to theoretically and empirically examining the phenomena of the "post-industrial society" emerging under contemporary capitalism and exploring alternative models. It focuses on interdisciplinary research on concepts such as immaterial labor, social production, the multitude, locality, and degrowth. The Institute publishes the academic journal *Post-Industrial Society Studies*, which was designated as a KCI candidate journal by the National Research Foundation of Korea in 2025, recognizing its academic credibility. Through collaborative research projects with scholars nationwide and practical engagement linked to civic movements, the Institute plays a leading role in advancing post-industrial society studies in Korea.



# Government-Funded Programs



## University Priority Research Institute Glocal Lab

Fostering university research institutes as regional research hubs to generate outstanding basic research outcomes and to cultivate talents, including the next generation of scholars

## Basic Research Laboratory Support Program

Strengthening national basic research capacity by supporting small-scale basic research groups centered on specific research topics

## MOLIT DNA+ Convergence Technology Graduate School Development Project (R&D)

Enhancing university innovation capacity and cultivating convergence professionals in the logistics field by supporting technology development that connects core future-industry technologies—DATA, NETWORK, and AI—with new industries in land, infrastructure, and transport

## ICT & Broadcasting Innovation Talent Development Program (R&D)

Support for master's- and doctoral-level degree programs that promote industry-academia research linked to regional industries by leveraging the university's intelligent capabilities, and that strengthen the competencies of incumbent employees.

## Industrial Innovation Talent Growth Support (R&D)

Establishing a virtuous cycle system that continuously supplies outstanding talent to industry by cultivating and utilizing professionals who will lead the development of key and emerging industries.

## University Priority Research Institute Support Program

Strengthening national research capacity through the establishment of university research infrastructure, balanced academic development, and the cultivation of the next generation of scholars.

## Humanities and Social Sciences Research Institute Support Program (Pure Academic Research Type)

- Fostering research institutes in the humanities and social sciences as research hubs through specialization and professionalization, and generating outstanding academic research outcomes
- Cultivating research groups and next-generation researchers capable of responding to national and social issues
- Exploring strategies for the advancement of the humanities, including the linkage between education and research centered on on-campus research institutes

## Regional Innovation System & Education (RISE)

A system in which local governments, which best understand their regions, and universities, where key regional human and material resources are concentrated, build cooperative partnerships to lead regional innovation and development.

## Brain Korea (BK)21 Phase 4 Program

A master's and doctoral-level talent development program that supports graduate student research scholarships and salaries for early-career researchers, enabling the next generation of scholars to focus on study and research

## Humanities and Social Sciences Convergence Talent Development Project (HUSS)

- Development and operation of curricula, including regular courses and extracurricular programs, aimed at solving social issues through interdisciplinary convergence centered on the humanities and social sciences
- Joint development of curricula among universities based on fields of comparative advantage, and establishment of an effective convergence education system through active material and human exchange

## Humanities Korea Plus (HK+) Support Program - Overseas Area Studies

- Supporting the continued development of outstanding HK research institutes that have grown into humanities research hubs, maximizing the utilization of established HK research personnel and promoting the deepening and advancement of research
- Promoting academic and social dissemination based on accumulated research achievements and infrastructure

## ICT Innovation Talent Development (R&D)

Cultivating master's- and doctoral-level core research personnel who will lead national innovation growth by supporting advanced research projects in promising ICT technology fields



# GO GLO BA L

Player with infinite potential !

Incheon National University is a place where students can achieve their dreams and bring out their full potential upon entering the global stage.

## College

- College of Humanities
- College of Natural Sciences
- College of Social Sciences
- College of Commerce and Public Affairs
- College of Engineering
- College of Information Technology
- College of Business Administration
- College of Arts & Physical Education
- College of Education
- College of Urban Science
- College of Life Science & Bioengineering
- College of Liberal and Interdisciplinary Studies
- School of Northeast Asian Studies (SONAS)
- School of Law

## Graduate School

- Graduate School
- Specialized/Special Graduate Schools

## Auxiliary Organizations/Affiliated Organizations

## Industry-Academy Cooperation

## Campus



## College of Humanities



- + Dept. of Korean Language & Literature
- + Dept. of English Language & Literature
- + Dept. of German Language & Literature
- + Dept. of French Language & Literature
- + Dept. of Japanese Regional Culture
- + Dept. of Chinese Language & Cultural Studies

The College of Humanities consists of the Departments of Korean Language and Literature, English Language and Literature, German Language and Literature, French Language and Literature, Japanese Regional Culture, and Chinese Language & Cultural Studies. Through in-depth education of national and foreign literature, students can experience national and world cultures and are educated to properly understand human emotions based on linguistic lifestyle. The Department of Korean Language and Literature aims to take Korean culture to the next level by inheriting unique language and literary traditions. Meanwhile, the foreign languages and literature departments expand cultural exchange in both academic and practical fields by exposing students to the world's excellent cultures and scholarship while learning the languages of various countries.



- + Dept. of Mathematics
- + Dept. of Physics
- + Dept. of Chemistry
- + Dept. of Fashion Industry
- + Dept. of Marine Science

## College of Natural Sciences

The College of Natural Sciences was established to foster fundamental sciences, develop new scientific technologies, and apply the results to actual life. The college consists of natural science departments (Mathematics, Physics, Chemistry, and Marine Science) and a life science department (Fashion Industry). The departments of natural sciences train students in various basic theories and practices that cover their major fields, striving to foster leading scientists, technicians, and educators in science and technology fields who will contribute to scientific and technological developments in Korea. The Dept. of Fashion Industry has set an educational goal of cultivating the future leaders of the global fashion market. Through a systematic combination of theory and practical experiences and a future-oriented education, we dedicate our effort to developing the textile and fashion industry as well as the fine arts and culture industry.



## College of Social Sciences

The College of Social Sciences consists of the Department of Social Welfare, which explores and researches theories and methodologies to lead the future of a welfare society. The Department of Media and Communication trains students to lead mass media in the age of digital communication. In addition, the Department of Library and Information Science aims to provide appropriate information by selecting and organizing the most optimal among a large amount of information and knowledge. In addition, the Department of Creative Human Resource Development fosters experts in corporate training and human resource development to cultivate creative talent.



- + Dept. of Social Welfare
- + Dept. of Media and Communication
- + Dept. of Library and Information Science
- + Dept. of Creative Human Resource Development



- + Dept. of Public Administration
- + Dept. of Political Science & International Studies
- + Dept. of Economics
- + Div. of Global Trade & Service
- + Dept. of Consumer Science



The College of Commerce and Public Affairs was established in 2016 after two years of intensive preparation as an expansion of the national education specialization project, founded alongside the Songdo Vision of "Fostering regional talent into world-class talent." With the participation of the Department of Public Administration, Department of Political Science & International Studies, Department of Economics, Division of Global Trade & Service, and Department of Consumer Science, the college maximizes the academic synergy between the convergence of fields of study to become a leading college in areas of liberal arts and social sciences and fosters talented individuals with excellent work experience in global fields of work equipped with knowledge, skills, and attitudes who are ready to make their way in international work environments.

## College of Commerce and Public Affairs

The College of Engineering began with five departments when Incheon Institute of Technology, the original campus of Incheon National University, opened in 1979. After the transfer of some departments (College of Information Technology and College of Urban Science) and the establishment of new departments, the College of Engineering grew to become a future-oriented school with eight departments, cultivating highly trained science and technology personnel demanded by contemporary industries and the information community.

The College of Engineering is committed to fostering human resources with international competitiveness and future-oriented expertise with the educational goal of "fostering professional engineers with a sense of responsibility and ethics, comprehensive design skills, field performance competence, and creativity."



## College of Engineering

- + Dept. of Mechanical Engineering
- + Dept. of Electrical Engineering
- + Dept. of Electronics Engineering  
(Electronics Engineering Major,  
Semiconductor Convergence Major)
- + Dept. of Industrial and Management  
Engineering
- + Dept. of Materials Science and Engineering
- + Dept. of Safety Engineering
- + Dept. of Energy and Chemical Engineering
- + Dept. of Biomedical & Robotics Engineering

- + Dept. of Computer Science & Engineering
- + Dept. of Information Telecommunication Engineering
- + Dept. of Embedded Systems Engineering



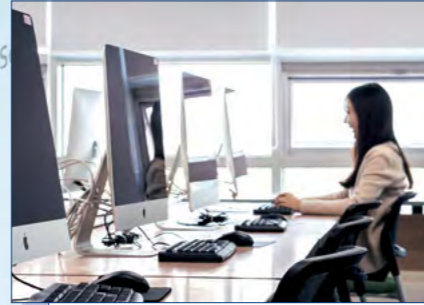
## College of Information Technology



The College of Information Technology started its independent operations in October 2002 to lead the theoretical development of information technology as well as foster technical experts that will meet the demands of industries. The college consists of the Department of Computer Science to train personnel for the computer software industry, the Department of Information and Telecommunication Engineering to foster talent in the network and information communication industry, and the Department of Embedded-Systems Engineering to cultivate those who will work for the industry that implements various multimedia systems.

With the fundamental ideology of "practical information technology education," the university is staffed with faculty members who are academically excellent and conduct various industry-academic collaborations.

Graduates have gone on to work for major corporations, foreign companies, and research institutes, as well as excellent SMEs that develop IT products.



The College of Business Administration was founded to train future business managers with the competences and responsibility required for the age of informatization and globalization.

The Department of Business Administration provides systematic education in all business management areas, including human resource organization, marketing, accounting, business science, finance, business administration information, and international business administration. The department also strives to foster global talent equipped with the business administration abilities of creating value that society and companies demand beyond core capabilities. The Department of Tax and Accounting provides in-depth and systematic education regarding tax and accounting fields, aiming to foster tax and accounting experts required by various entities, including companies and government agencies.

As an advanced organization that handles the latest issues, the Department of Data Science enables students to learn various business administration analysis techniques to equip themselves with analysis capabilities based on data. With this foundation, the department aims to foster talented individuals with a competitive edge for utilization in corporate business administration.

As an evening-class program that allows employed students to acquire degrees through the course, the Department of Technology Management enhances the task implementation abilities of industry workers and enables them to obtain new knowledge, striving to create new values through the convergence of innovative technology and business administration.

- + Dept. of Business Administration
- + Dept. of Data Science
- + Dept. of Tax & Accounting
- + Dept. of Technology Management

## College of Business Administration

## College of Arts & Physical Education

- + Dept. of Fine Art  
(Painting Major, Korean Painting Major)
- + Div. of Design
- + Dept. of Performing Arts
- + Div. of Sport Science
- + Div. of Health & Kinesiology



The College of Arts & Physical Education consists of the Department of Fine Art, Division of Design, Department of Performing Arts, Division of Sport Science, and Division of Health & Kinesiology. The Department of Fine Art consists of the Painting Major and Korean Painting Major, both aiming to produce creative and competent professional artists through in-depth education of expertise. The Division of Design provides a balanced and integrated education through various disciplines to create a new design culture required by the knowledge and information society, and strives to foster talented individuals who will present a future-oriented design vision by inspiring themselves with a way of flexible and broad ways of thinking about design. Newly established in 2010, the Department of Performing Arts systematically educates students in theory and practice regarding performing arts, focusing on acting and dance. Such systems aim to develop the cultural arts, which have become crucial in the 21st century, and to foster creative artists who will represent Korea and become the leaders of performance culture. The Division of Sport Science cultivates core professionals across the sports industry, including the fields of clinical exercise, health fitness, and sport management. The Division of Health & Kinesiology equips future professionals with a solid foundation in athletic training, rehabilitative exercise, exercise physiology, health promotion, and sports industry. By emphasizing practical training and integrating smart healthcare technologies on top of profound theoretical background, our program prepares students with global competence for careers in diverse field related to sport including but not limited to the following areas: athletic training, disability sports, sports business, and public health.

## College of Education



- + Korean Language Education
- + English Language Education
- + Japanese Language Education
- + Mathematics Education

- + Physical Education
- + Early Childhood Education
- + History Education
- + Ethics Education

Established in 2010, the College of Education has eight departments: Korean Language Education, English Language Education, Japanese Language Education, Mathematics Education, Physical Education, Early Childhood Education, History Education, and Ethics Education. Teaching and researching expertise and practices related to education in general and curriculum education, the college strives to contribute to the development of education by fostering secondary school teachers with leadership, creativity, and excellent qualities as well as experts in all areas of education.

- + Dept. of Urban Policy and Administration
- + Dept. of Urban Engineering
- + Dept. of Civil and Environment Engineering (Civil and Environmental Engineering Major, Environmental Engineering Major)
- + Div. of Architecture & Urban Design (Major of Architectural Engineering, Major of Architecture and Urban Design)



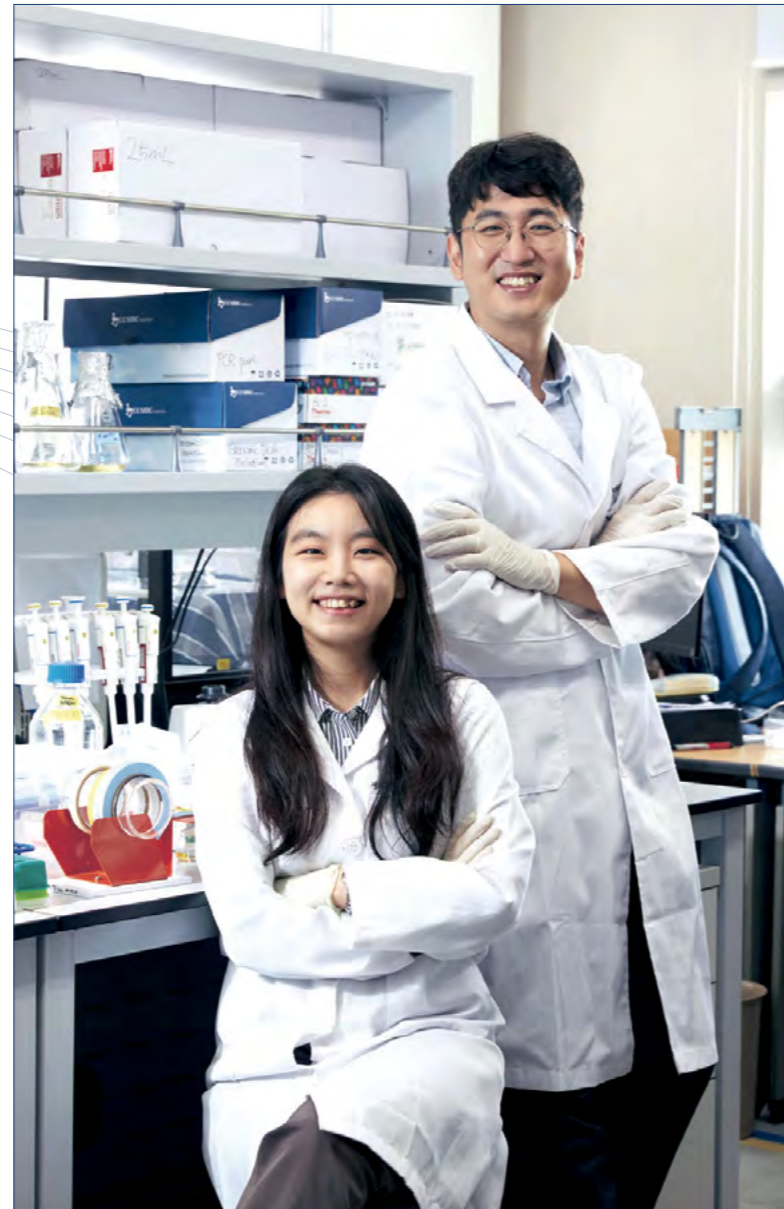
The College of Urban Science was established with the goal of incorporating the global trend of rapid urbanization into its educational mission. Its objective is to train experts in the field of urban science capable of addressing challenges associated with urbanization and proposing innovative solutions for the creation of sustainable and resilient urban areas. The Department of Urban Policy and Administration trains professionals who combine engineering planning of urban construction with social, administrative, and financial theories and practices. The Department of Civil and Environment Engineering aims to improve the quality of life of people by preserving and enhancing a clean environment along with nature and developing efficient and safe social infrastructure (SOC). The department of urban engineering fosters urban experts to create a sustainable and resilient urban environment, as well as to address the evolving challenges of modern city planning and development. The Department of Architecture & Urban Design trains talent who will understand and lead international-level urban architectural culture and technology with integrative capabilities.

## College of Urban Science



Life science and engineering are the studies based on life phenomena that understand mechanisms and functions of life and use them to solve problems in various fields such as environment, food, resources, energy, medicine, and welfare. The 21st century is the age of bio industries, and life science and engineering are the power stations of the growth of a nation's competitive edge. Therefore, in addition to in-depth fundamental research on life phenomena, the College of Life Science & Bioengineering aims to contribute to the creation of new added value and high-tech industries regarding bio-industries, such as bio-medicine.

- + Dept. of Life Sciences (Major of Life Sciences, Major of Molecular & Medical Science)
- + Dept. of Bioengineering (Bioengineering Major, Nano-Bioengineering Major)



## College of Life Science & Bioengineering

## College of Liberal and Interdisciplinary Studies



- + Dept. of Undeclared Majors
- + Dept. of Undeclared Majors for International Students
- + Dept. of Convergence

The College of Liberal and Interdisciplinary Studies was established in May 2024 to cultivate integrated leaders capable of responding to rapid societal changes. The College of Liberal and Interdisciplinary Studies supports students in exploring diverse academic fields and freely designing their own majors based on their interests and aptitudes. It aims to foster future-oriented talent through self-directed major design, creative and independent thinking and competencies. The college consists of the Division of Undeclared Majors, the Division of Undeclared Majors for International Students, and the Division of Interdisciplinary Convergence. The Division of Interdisciplinary Convergence oversees interdisciplinary programs, including linked majors and student-designed interdisciplinary major initiatives.

## School of Northeast Asian Studies (SONAS)

+ School of Northeast Asian Studies(International Commerce and Asian Studies Major, International Business Economics (IBE) Major, Smart Logistics Engineering Major)



School of Northeast Asian Studies aims to foster Northeast Asian trade specialists who can promptly respond to changes in the global trade environment and lead Korea's trade development. School of Northeast Asian Studies was designated a Regional Specialized University by the Ministry of Education in 1997. Since then, it has become one of Korea's leading specialized schools in economics and trade by focusing on foreign language education, Northeast Asian economic research, and theoretical and practical education in economics and trade. The school has also fostered global commerce professionals who can lead the age of Northeast Asia. Consisting of the International Commerce and Asian Studies major, IBE major (for international students only), and Smart Logistics Engineering major, School of Northeast Asian Studies strives to foster convergence experts who will be able to respond to the structural changes in the global economy through innovative education that carries the convergence of Northeast Asia's international logistics and smart logistics engineering. The IBE (International Business Economics) major aims to cultivate global convergence talent through business economics education in the style of the United States.



Keeping up with Incheon National University's specialization strategy, the School of Law has shifted its focus from theories to practical legal education to train professional lawyers, foster regional legal experts, and prepare legal experts for the Northeast Asia-centric era. By implementing a specialized public examination class to foster professional judicial officers and legal experts, the college has produced legal experts in fields that require expertise in legal knowledge and society as well as numerous students who have passed law officer examinations and graduated law school. In the field of academics, the college has produced many students with master's or doctoral degrees by allowing them to enroll in domestic or foreign graduate schools, including Incheon National University. Furthermore, the School of Law is strengthening its international commerce law education with a focus on Chinese legislation to cultivate talent preparing for the Northeast Asia-centric era and promoting exchange with foreign law faculties and major law firms.



## School of Law



# Graduate School

The Incheon National University Graduate School is advancing as a flagship national graduate institution that contributes to the nation and society while serving as a hub of future innovation leading both the global and regional communities. Centered on the INnUva: INU Graduate School brand, it promotes specialization, internationalization, and research-driven educational innovation, striving to become a top-10 research-focused graduate school in Korea and a top-100 institution worldwide.



## Master Course

### Humanities & Social Science Departments

22 departments

- + Dept. of Korean Language and Literature
- + Dept. of Korean Language Education for Foreigners
- + Dept. of English Language and Literature
- + Dept. of German Language and Literature
- + Dept. of French Language and Literature
- + Dept. of Japanese Regional Culture
- + Dept. of Chinese Cultural Studies
- + Dept. of Education
- + Dept. of Social Welfare
- + Dept. of Ethics
- + Dept. of Public Administration
- + Dept. of Urban Policy and Administration
- + Dept. of Politics and International Relations
- + Dept. of Media Communication
- + Dept. of Library and Information Science
- + Dept. of Law
- + Dept. of Business Administration
- + Dept. of International Trade
- + Dept. of Economics
- + Dept. of Northeast Asian Studies
- + Dept. of Consumer Science
- + Dept. of Tourism, Convention, and Entertainment

### Natural Science Departments

7 departments

- + Dept. of Mathematics
- + Dept. of Physics
- + Dept. of Chemistry
- + Dept. of Life Sciences
- + Dept. of Marine Science
- + Dept. of Clothing & Textiles
- + Dept. of Cosmetic Science and Management

### Engineering Departments

16 departments / 5 joint courses

- + Dept. of Mechanical Engineering
- + Dept. of Biomedical & Robotics Engineering
- + Dept. of Electrical Engineering
- + Dept. of Electronics Engineering
- + Dept. of Industrial & Management Engineering
- + Dept. of Materials Science and Engineering
- + Dept. of Safety Engineering
- + Dept. of Energy and Chemical Engineering
- + Dept. of Computer Science and Engineering
- + Dept. of Information and Telecommunication Engineering
- + Dept. of Embedded Systems Engineering
- + Dept. of Civil and Environmental Engineering

### Arts & Physical Education Departments

4 departments

- + Dept. of Human Movement Science
- + Dept. of Arts
- + Dept. of Design
- + Dept. of Performing Arts

- + Dept. of Environmental and Energy Engineering
- + Dept. of Urban Construction Engineering
- + Dept. of Architectural Design and Engineering
- + Dept. of Bioengineering and Nano-Bioengineering
- + Industry-Academia Collaboration Course (Korea Institute of Industrial Technology)
- + Dept. of International Climate Cooperation
- + Dept. of Intelligent Semiconductor Engineering
- + Dept. of Future Mobility Major
- + Dept. of Bio-Health Convergence

## Doctoral Course

### Humanities & Social Science Departments

17 departments / 2 joint courses

- + Dept. of Korean Language and Literature
- + Dept. of Korean Language Education for Foreigners
- + Dept. of English Language and Literature
- + Dept. of Japanese Regional Culture
- + Dept. of Chinese Cultural Studies
- + Dept. of Education
- + Dept. of Social Welfare
- + Dept. of Public Administration
- + Dept. of Politics and International Relations
- + Dept. of Media Communication
- + Dept. of Library and Information Science
- + Dept. of Law
- + Dept. of Business Administration
- + Dept. of International Trade
- + Dept. of Economics
- + Dept. of Northeast Asian Studies
- + Dept. of Consumer Science
- + Dept. of Urban Planning and Policy
- + Dept. of Child, Forest and Nature Education
- + Dept. of Tourism, Convention, and Entertainment

### Natural Science Departments

7 departments

- + Dept. of Mathematics
- + Dept. of Physics
- + Dept. of Chemistry
- + Dept. of Life Sciences
- + Dept. of Marine Science
- + Dept. of Clothing & Textiles
- + Dept. of Cosmetic Science and Management

### Engineering Departments

15 departments / 5 joint courses

- + Dept. of Mechanical Engineering
- + Dept. of Biomedical & Robotics Engineering
- + Dept. of Electrical Engineering
- + Dept. of Electronics Engineering
- + Dept. of Industrial & Management Engineering
- + Dept. of Materials Science and Engineering
- + Dept. of Safety Engineering
- + Dept. of Energy and Chemical Engineering
- + Dept. of Computer Science and Engineering
- + Dept. of Information and Telecommunication Engineering
- + Dept. of Embedded Systems Engineering
- + Dept. of Civil and Environmental Engineering
- + Dept. of Environmental and Energy Engineering

### Arts & Physical Education Departments

2 departments

- + Dept. of Human Movement Science
- + Dept. of Design

- + Dept. of Architectural Design and Engineering
- + Dept. of Bioengineering and Nano-Bioengineering
- + Dept. of International Climate Cooperation
- + Dept. of Urban Convergence Engineering
- + Dept. of Intelligent Semiconductor Engineering
- + Dept. of Artificial Intelligence
- + Dept. of Bio-Health Convergence

## Specialized/Special Graduate School

To foster the best talent with heightened expertise and a competitive edge, we operate 7 specialized/special graduate schools and 30 departments.

### Graduate School of Logistics (Korea's first specialized logistics graduate school)

Because Incheon is designated as a free economic zone and possesses an international airport and harbor, it has the potential to realize the vision of the center of East Asian logistics and businesses. To achieve this goal, the Graduate School of Logistics was established in 2004 as the first graduate school in Korea to foster internationally competitive logistics experts and secure international research capabilities, offering master's and doctoral programs. Each course is divided into Logistics Management and Convergent Logistics System Departments. Detailed research areas include harbor logistics, aerospace logistics, corporate logistics, and SCM.

Since opening, it has consistently received specialization project funding from the Ministry of Education, the Ministry of Land, Infrastructure, Transport and Tourism, and the Ministry of Maritime Affairs and Fisheries, and supports international exchange students, overseas training and tours, various intensive courses and certifications, and scholarships.

- |                        |                                 |  |
|------------------------|---------------------------------|--|
| <b>Master Course</b>   | + Dept. of Logistics Management | + Dept. of Convergent Logistics System |
| <b>Doctoral Course</b> | + Dept. of Logistics Management | + Dept. of Convergent Logistics System |

### Graduate School of Education

The Graduate School of Education aims to train competent educators with teaching expertise and creativity to meet the sophisticated requirements of education by researching and teaching the theories and practice of education. Furthermore, the school serves an institution for teacher retraining and fostering excellent teachers by developing various teaching methods and curricula to meet the needs of a knowledge-based society and diversified education, and by empowering the linkage with on-site education and teacher training.

- + Humanities & Social Sciences - Education Leadership, Class Design & Consulting, Lifelong & Vocational Education, Counseling & Psychology, Creative & Talent Education, Korean Education, English Education, Japanese Education, History Education, Ethics Education, Early Childhood Education, Children's Art Psychotherapy, Media Education
- + Natural Sciences - Mathematics Education
- + Arts and Physical Education - Art Education, Physical Education, Sports Culture Administration

### Graduate School of Information Technology

The Graduate School of Information Technology was founded in 1986 to cultivate professionals with global competitiveness in the information community based on high-speed information and communication networks. The school consists of three majors: Computer Science, Information & Telecommunications, and Embedded System, and has plans to establish new departments to meet IT trends demanded by the advanced information society of the future.

- + Computer Science
- + Information & Telecommunications
- + Embedded System

### Graduate School of Public Policy

Founded in 1995, The Graduate School of Public Policy trains practitioners and leader-level managers to contribute to national and community development based on state of the art policy and administrative knowledge. The Department of Public Administration focuses on theoretical and practical research on public administration, while the Department of Judicial Administration researches the theory and practice of judicial administration. Meanwhile, the Department of Social Welfare studies and examines a wide range of ideas on social welfare and policies to foster human resources with the necessary expertise to create a welfare society. Finally, The Department of Political Science and International Studies trains current and future leaders to pursue scientific knowledge on domestic and world politics with analytical rigor. The department also emphasizes practical ability to apply scientific knowledge and analytical skills for real world policy.

- + Dept. of Public Administration
- + Dept. of Judicial Administration
- + Dept. of Social Welfare
- + Dept. of Political Science & International Studies

### Master of Business Administration

The Master of Business Administration (MBA) was launched in 1997 as a special graduate school program to train professional managers with the expertise and decision-making capabilities required by companies in the era of informatization and globalization. The Master of Business Administration aims to develop students into future business leaders with competitive edge, providing students with systematic theoretical knowledge and experience in all business management vocation areas, including international management, management information systems (MIS), marketing, operations management, human resource organization, finance, and accounting necessary for corporate management.

- + Business Administration

### Graduate School of Engineering

The Graduate School of Engineering was established in 1997 with the approval of the Ministry of Education to cultivate professionals capable of taking a leading role in creative research, development, and production while responding flexibly to rapidly advancing industrial technologies. The graduate school currently offers five majors and plans to expand related programs in line with industrial technology trends required by advanced industrial societies. The master's program is operated through evening classes and is taught by distinguished faculty members of Incheon National University as well as invited professors who are recognized authorities in their respective fields. In addition to theoretical education, the program strengthens laboratory and practical training based on advanced educational facilities, contributing to the development of highly demanded engineering professionals.

- + Mechanical Engineering
- + Civil and Environmental Engineering
- + Architecture
- + Urban Engineering
- + Safety Engineering

### Graduate School of Culture

There is growing awareness that a happy cultural life is a basic right that must be enjoyed by all and that we must increase the cultural competence of our citizens above all else to create a sustainable society. In addition, the promotion of regional culture from the perspective that all regions have equal value, rather than the capital being the focal point and other regions serving minor roles, is also a crucial goal for cultural autonomy and cultural decentralization. In particular, Incheon, although it may be a major city with a population of 3 million, it still lacks the education system that raises talented individuals who enhance citizens' pride by researching the area's cultural resources through suitable planning and operations and studying cultural autonomy and cultural decentralization. Under these circumstances, the Graduate School of Culture serves to foster new talent in local culture and retraining existing experts. Through such measures, the school aims to fulfill the mission of a regional flagship university by addressing local cultural challenges and laying the cornerstone for the foundation of a cultural city. Furthermore, it strives to contribute to creating a rich local culture by closely communicating with other regions by setting Incheon as a foothold, rather than residing solely in Incheon.

- + Dept. of Regional Culture Studies



# Auxiliary Organizations / Affiliated Organizations

The affiliated and attached institutes of Incheon National University, supported by advanced educational environments, foster distinctive expertise and provide specialized support for academic excellence.



## Institute for Athletics Promotion

Founded in 1982, the Institute for Athletics Promotion oversees tasks including athletic department operations, student athlete management, sports center operations, and athletic facility rentals. Currently, the institute fields a total of six sports teams: soccer, shooting, badminton, archery, tennis, table tennis.

## Engineering Education Innovation Center

The Engineering Education Innovation Center was founded to set the path of innovation in engineering education by establishing a unique strategy and type of engineering education and to develop and operate engineering education programs that meet industry demands and the characteristics of each university, inducing the specialization of engineering majors. The institute is enabling the university to become a hub of engineering design based on industry-academy cooperation by establishing an engineering education system oriented to industry demands and developing engineering training programs equipped with specialization strategies and compatibility with engineering majors.

## Local Companionship Platform

The Local Companionship Platform was established in 2023 as an auxiliary organization of the university to contribute to national and regional development by actively addressing key challenges facing the country and local communities. It leverages the university's expertise and human resources to propose effective, practical solutions. Through forums, seminars, lectures, and research initiatives, the platform fosters a participatory governance model rooted in civic engagement. It serves as a bridge for collaboration and partnership among universities, local governments, industries, and civil society to promote sustainable national and regional development.

## Computing & Information Center

As the core department of university informatization, the Computing & Information Center provides information infrastructure and services to realize learning, teaching, research, administration, and school life based on advanced technologies. The center runs the portal site, webmail, and integrated information systems for seamless informatization within the university and supports campus network and wireless LAN services to create a smart campus environment.

## Center for Continuing Education

The Lifelong Education Institute was established in March 1998 to open the university's professional knowledge infrastructure to the public. In accordance with the Lifelong Education Act, it provides a wide range of programs beyond formal degree curricula, including academic credit-based education, adult literacy education, vocational skill development, humanities and liberal arts education, cultural and arts programs, and civic participation education, aiming to serve as a regional lifelong learning platform. In September 2025, the institute established the K-Culture Center to offer global citizenship cultural education and specialized training programs for K-content professionals.

## Confucius Academy (Confucius Institute)

The Confucius Academy, established by the Chinese International Education Foundation, a private international institute for education, opened its branch at Incheon National University in August 2009 as a non-profit education organization to provide Chinese language learning opportunities and cultural exchanges with countries worldwide. The academy provides various lectures and events for anyone wishing to learn Chinese, experience Chinese culture, or hope to study in China.

Course Application and Schedule: <https://ciui.inu.ac.kr>

## INU Startup Business Support Platform

The platform aims to become a cradle for cultivating innovative Korean venture companies and startups. After being established in 2011 as the office dedicated to supporting business foundations within the university, its goal is to spread the spirit of entrepreneurship and promote youth startups. The INU Startup Business Support Platform supports systematic business foundation training, project exercises, and mentoring sessions through its startup college program and utilizes various specialized startup support projects and venture investment funds to foster innovative venture companies and startups.

INU PARTNERS Inc. - This specialized corporation was founded to operate investment associations and to facilitate venture funds for the discovery of business foundations within the university and stimulation of investment. INU PARTNERS allows the university to grow together with technology innovation startups and contributes to creating jobs within the school and invigorating the regional economy.

## Academy of Chinese Studies

The Academy was established to serve as a global-level hub in Chinese studies, contributing to regional and national development by creating a new paradigm in Chinese studies that aligns with contemporary changes. Its role includes the organic integration of research and education, the construction of networks both domestically and internationally, and the extensive accumulation and updating of resources and information. Steering away from the segmented academic systems in Chinese studies and establishing an interdisciplinary integrated system, it serves as a nurturing ground for experts specializing in Chinese-related regional studies and actively participates in developing the growth dynamics of the local community.

## Center of INU Research Facilities

The Center of INU Research Facilities aims to enhance research capabilities in basic science and technology by operating and managing high-end research equipment. In addition to supporting university-led research, it provides cutting-edge equipment for research institutes and industries, establishing a strong industry-academia cooperation system, that contributes to scientific advancement.

- Operation and management of high-value research equipment
- Shared use of equipment with universities, research institutes, and industries
- Research equipment training sessions and seminars

\* Website of Center of INU Research Facilities: <https://rf.inu.ac.kr>

## Reserve Officers' Training Corps (ROTC)

The Reserve Officers' Training Corps (ROTC), established in 1961, is a program designed to cultivate outstanding university students as commissioned officers. While maintaining regular campus life, participants complete a designated two-year military training curriculum during their junior and senior years and are commissioned as second lieutenants upon graduation. After commissioning, they serve as officers for approximately two years and four months, holding a status equivalent to Ministry of National Defense personnel (Second Lieutenant to First Lieutenant), with opportunities for extended service if desired. ROTC graduates demonstrate strong career outcomes after discharge and play key roles across various sectors of society. The ROTC program, combining academic excellence and leadership, is a distinguished opportunity available exclusively to university students.

- Short-term service incentives, self-development support funds, training allowances, and university/external scholarships
- Overseas leadership training programs in collaboration with U.S. military academies
- Domestic and international historical site visits, security tours, and defense industry exhibitions
- Welfare benefits including access to military hospitals and resorts, as well as discounts for cultural events

### Auxiliary Organizations

### Haksan Library

To support the academic research and learning activities of university members effectively, Haksan Library systematically collects, manages, and services materials to accommodate the information needs of library users, enhance their expertise, and contribute to fostering knowledge of the liberal arts. The library retains around 1.53 million documents, including books, Korean and international journals, and multimedia. Meanwhile, it has also opened Irum Hall (2nd Library), a cultural complex for ICT-based employment, business foundation, and collaboration, providing about 2,700 seats for various types of reading.

### HOUSING AND RESIDENTIAL SERVICES

Dormitory #1, #2, and #3 opened in 2009, 2018, and 2020, respectively, with a total of 1,344 rooms and capacity for 2,676 students. With Dormitory #4 set to open in 2027, it will increase the dormitory capacity to 3,492, with the area contributing to a sound school culture by providing high-quality and quantity services and preparing an environment that combines the healthy life of students with true education. The Dormitories and Guest house at Incheon National University will evolve into a living space that aligns with future trends, embracing smart technology, internationalization, and the university's transformation into a research-oriented institution. It will also serve as a platform to promote Incheon National University worldwide.

**Affiliated Organizations**

**INU Newspaper**

INU Newspaper strives to deliver accurate news reports honestly to enable the university to flourish and foster the character and ideas of students under the slogan, "Breaking the wrong and revealing the right." The organization reports on various events at INU and student activities, criticizes a wide range of matters in and outside the university, and proposes alternatives, helping students equip themselves with knowledge and ideas. Its members also deliver academic content, contributing to students' emotional cultivation and cultural refinement.

**INU English Newspaper**

In 1988, with the goal of simultaneously striving for academia and journalism, the INU English Newspaper first published the "Incheon University Campus Life" in a tabloid format to raise awareness of the right idea of media practices for university members and increase interest in foreign languages. Later, the organization changed the format to magazines to provide information with more depth and variety. Currently, an English magazine called "The News Line" is published quarterly.

**Educational Broadcasting Station**

Founded to create a sound university press culture and realize the ideas of a national university through good broadcasts, the Educational Broadcasting Station reports the university's announcements and living information to school members, delivering helpful university life information. The station also fosters outstanding broadcast personnel through its curriculum of various expertise and technologies regarding broadcasting. Furthermore, the Educational Broadcasting Station started Internet streaming in 2001, allowing school members to access more information in and outside of the school with ease.

**University Press Office**

The University Press Office strives to contribute to the growth of the university's academic and publishing culture through the release of Incheon National University's academic culture books and common course materials for general studies. The office's projects include the publication of academic and culture books, publication of common course materials for general studies, publication of works that will contribute to the development of academic culture, and the sale and supply of published books.

**Industrial Cooperation's New Paradigm**

Incheon National University proposes a new paradigm of industry-academy cooperation, leads the economic growth of Incheon, and fosters talented individuals to go beyond the local community to contribute to the nation's competitive power.



**INU Research & Business Foundation**

The INU Research & Business Foundation was established to foster creative industrial personnel by promoting industrial education and industry-academy collaboration, develop, distribute, and disseminate new knowledge and technologies necessary for industries' growth, and with its financial revenue, contribute to the procurement of funds for education and research as well as national economic development. Key tasks include signing and implementing industry-academy cooperation agreements, administrative and accounting management regarding industry-academy cooperation projects, acquisition and management of intellectual property rights, technology transfers and commercialization promotion, support for university facilities and operations, and other work related to industry-academy cooperation.

**SME Industry-Academy Cooperation Center**

Founded in October 1994, the SME Industry-Academy Cooperation Center jointly operates Incheon National University's research personnel, facilities, and equipment to solve Incheon SME work site issues and develop new processes and products. These operations allow the center to establish an industry-academy cooperation system to empower the university's competitive edge and go on to revitalize the local economy.

**INU Holdings Co., Ltd.**

INU Holdings Co., Ltd. is a university technology holding company established in November 2009 as the eighth such entity in Korea to systematically commercialize the university's technologies, including patents, intellectual property rights, and technical know-how. It supports technology commercialization through subsidiary establishment and tailored business strategies, currently managing a total of 29 subsidiary companies (as of December 31, 2025).

**INU Science Elite Education Center**

The INU Science Elite Education Center is run with the support from the Ministry of Science and ICT (Korea Foundation for the Advancement of Science & ICT), the Incheon Metropolitan Government, and Incheon National University. It was founded in June 1988 according to the designation of the Ministry of Science and Technology and has been selected many times as the "Nation's Best University Affiliate Science Elite Program." Since its initial stages, the program has grown with the enthusiastic support and cooperation from regional community entities such as the Incheon Metropolitan Government, Incheon National University, and the Incheon Office of Education, and is doing its best to foster science elites who will lead the future of Korea through science education and training on creativity and character.

**Incheon Green Environment Support Center**

The Incheon Green Environment Support Center was designated and founded by the Ministry of Environment in March 2000. The center initiates specialized environment education and external cooperation projects to gather research capabilities in an effort to solve regional environmental issues, define the environmental pollution phenomena unique to Incheon through systematic research, develop necessary green technologies by diagnosing regional industries' environmental issues, and train professionals.

**East Asia Electronics Logistics Research Center**

Founded in July 2002, the East Asia Electronics Logistics Research Center operates with the goal of contributing to the national logistics industry by researching supply chain management and smart chains and fostering personnel specialized in airport and harbor logistics.

## Humanities Korea Plus (HK+) Project Group

The HK+ Project, operated by the Institute of Chinese and Overseas Chinese Culture within the Academy of Chinese Studies, is one of the largest and longest-running research projects on China in Korea. Recognized for the academic excellence of the Academy of Chinese Studies, the project was selected as one of the Ministry of Education's Top 50 Achievements in 2024. The project group has produced in-depth research on mainland China, Hong Kong, Taiwan, and overseas Chinese communities worldwide. Through the nation's largest Chinese studies resource center and a regional humanities center, the group plays a central role in positioning the INU as a key institution for Chinese studies in Korea while actively contributing to the local community.

## Innovation Personnel Development Center

The Innovation Personnel Development Center, Korea's first joint biotraining center, was founded in 2017 under the leadership of the College of Life Science & Bioengineering to lead and foster the bioindustry, the key business of Incheon. By actively utilizing the university's outstanding facilities, equipment, and human infrastructure, the center provides specialized job training in biomedicine, pharmaceuticals, cosmetics, food, and medical devices, the core industries in the bio sector, based on local demand. The center also contributes to improving technical skills and strengthening the competitive edge of SMEs in related fields, as well as resolving youth unemployment by linking them to job recruitment.

## Incheon's Seo-gu Small Giant R&D Special Sector Business Group

Incheon's Seo-gu Small Giant R&D Special Sector Business Group promotes R&BD at universities, research institutes, and companies in the area and invigorates cooperation between entities. Through its operations, the group has contributed to innovative growth, establishing a foothold of commercialization for ICT convergence regarding management and handling of environmental pollution and creating jobs in environmental technology areas.

## Eco-friendly Bioplastic Center

The Eco-friendly Bioplastic Center was founded in June 2021 to strengthen education, research, and industry-academy cooperation in the field of biodegradable products and bioplastics (white-bio) to stimulate the age of carbon neutrality. Selected as the Ministry of Trade, Industry and Energy's Plastic Substitute Foundation Establishment Support Center, the center conducts white-bio life cycle research, industrial support, global network establishment, standard development, and empirical evaluations. It was also selected as the Ministry of Trade, Industry and Energy's White-Bio Specialized Research Personnel Training Project, developing the nation's first master's and doctoral professional training in bioplastics.

## Next-Generation Convergence Semiconductor Research Institute

Founded in 2022 according to the selection of the Semiconductor Infrastructure Utilization Field Personnel Training Project, the Next-Generation Convergence Semiconductor Research Institute lays the foundation for fostering high-quality personnel in semiconductor areas and effectively supports the training of core workers in semiconductors by linking with company demands and expanding relevant employment opportunities. The institute also consistently utilizes the education infrastructure and content of excellent quantity and quality established through its project to train personnel in semiconductor fields, support the advancement of the industry, and expand the results from such efforts to support regional and national innovation and the procurement of competitiveness.

## Smart Logistics System Innovation Research Center

Incheon National University's Smart Logistics System Innovation Research Center is a national research center established to enhance the innovative capabilities of the university and foster specialized convergence personnel in logistics areas by supporting the convergence technology development of data, network, and AI (D.N.A), the core technologies of future industries, linked with new industry areas of national transport. By utilizing convergence technologies in the fields of logistics data, network, and AI, the center can directly uncover issues in logistics areas and provide solutions. The center also aims to train experts with the ability to discover and commercialize new business models in the logistics field based on digital platforms. In addition, individual research teams are configured to conduct national R&D research projects, and the planning and fulfillment of independent research projects based on the Living Lab are supported by pairing with joint R&D institutes. The center contributes to logistics big data analysis and model development, logistics facility and network optimization, logistics process analysis and optimization, AI-based automation solution design, logistics business model analysis and design, and logistics technology startup and commercialization.

## Institute for Science-Gifted Education

The INU Institute for Science-Gifted Education is officially accredited gifted education institution, authorized by the Incheon Metropolitan City Office of Education in accordance with Article 10 of the Enforcement Decree of the Gifted Education Promotion Act and the Incheon Metropolitan City Office of Education's Regulations on the Establishment and Operation of Gifted Education Centers. The institute aims to nurture future talent equipped with creative problem-solving skills and interdisciplinary thinking, in line with the demands of the digital transformation era. Through an online-based learning environment, it provides educational opportunities that go beyond the limits of time and space. In particular, the institute strives to improve access to gifted education for students from diverse backgrounds, including those from disadvantaged communities, rural areas, and island regions. To this end, the institute offers personalized learning content and tailored support programs. By fostering a fair and inclusive ecosystem for gifted education, the institute is committed to helping every student realize their full potential and grow.

## Cyber Gifted Education Center

The Cyber Gifted Education Center at Incheon National University is an officially accredited gifted education institution authorized by the Incheon Metropolitan Office of Education in accordance with Article 14 of the Gifted Education Promotion Act. In the era of digital transformation, the center aims to cultivate future talents equipped with creative problem-solving abilities and interdisciplinary thinking by providing online learning environments that transcend temporal and spatial limitations. It expands educational accessibility for learners from diverse backgrounds, including underserved communities and remote regions, by offering customized educational content and individualized support programs, while fostering a fair and inclusive gifted education ecosystem.

## INU AI+X Research Education Project Group

According to its selection as the leading R&D institution for the Integrated Bachelor-Master's ICT Core Talent Training Project, the AI+X Research Education Project Group strives to systematize training and support for advanced AI+X convergence talent through convergence education and research in semiconductors, healthcare, robots, and drones, among other AI fields to meet the urgent need to cultivate R&D personnel (master's degree or higher) on a massive scale to preempt the global market through industrial application, in addition to enhancing artificial intelligence technology.

## Innovative Personnel Convergence Education Center for Digital Convergence Safety Designs

Founded according to the selection of the Innovative Personnel Training Project Group for New Technology Convergence Designs, the Innovative Personnel Convergence Education Center for Digital Convergence Safety Designs aims to contribute to improving the quality of university education and empowering innovation capabilities by establishing a technology convergence education system, improving the digital convergence safety design industry, securing new growth sources through industry, academia, and research collaboration, and procuring national competitiveness in the field of digital convergence safety design.

## Future Vehicle Convergence Innovation Center

Future Vehicle Convergence Innovation Center secures new growth engines and brings advancements to the automotive industry in Incheon through collaborations between industry, academia, and research sectors, including fostering innovative talent in the field of future automobiles and actualizing practical skills based on field demand of undergraduate personnel.

## NS-Satellite RTDC Research Center (Nation-Designated Radio Satellite ITRC)

With the support of the Ministry of Science and ICT, the center aims to build foundations for education and R&D to foster experts specializing in radio wave engineering and satellite technologies, cultivate hardware and software development capabilities and professional experts regarding low-earth orbit (LEO) satellite communication to prepare for the next-generation telecommunication age, produce master's and doctoral graduates, and contribute to the country's competitive power in 6G mobile communication and satellite technology areas.

## Regional Industry Intelligence Innovation Research Center

Established in 2023, the INU Regional Industry Intelligence Innovation Research Center aims to build a practical and effective industry-academia cooperation ecosystem by developing research and education infrastructure tailored to the region's key industries—automotive and semiconductors. The center also contributes to cultivating a skilled workforce in the future mobility sector, including autonomous driving and automotive software, by establishing specialized degree programs and producing highly trained professionals.

# Reaching Out to the World, The High-Tech Campus

- An environmentally friendly campus that provides natural ecosystems and green parks within the city
- A campus furnished with ubiquitous wired and wireless Internet networks
- Implementation of cutting-edge lecture systems for colleges (installed 130 electronic lecture desks)
- A convention center complete with medium and large forum-style classrooms and seminar halls
- Implementation of an international video academic seminar environment
- Installation of state-of-the-art research labs (clean rooms, heat-resistant and moisture-resistant labs) and joint experiment centers for collaborative research between universities, research institutes, and industry
- Air conditioning and heating utilizing ground heat and solar power (kindergarten, ROTC)
- Cultural and welfare facilities for exchanges with the local community (sports center, swimming pool, squash court, gym, auditorium, performance hall, observatory, international regulation grass field, etc.)



<b>Lot Area</b>	456,805 m <sup>2</sup>
<b>Total Ground Area</b>	299,599 m <sup>2</sup>
<b>Construction Volume</b>	32 facilities - 1 underground, 6 above ground (living areas 9F-15F)
<b>College</b>	9 facilities, 12 colleges (2 independent divisions)
<b>Administration Support and Welfare Facilities</b>	12 facilities
<b>Local Public Facilities</b>	Auditorium & performance hall, sports center, golf practice center, gym, kindergarten, observatory

## Campus Guide

- |   |  |  |   |
|---|--|--|---|
| <b>01</b> Administration Building   | <b>09</b> Joint Laboratory   | <b>15</b> College of Humanities                            | <b>22</b> ROTC                          |
| <b>02</b> Faculty Hall  | <b>10</b> Guest House  | <b>16</b> College of Arts & Physical Education             | <b>23</b> Auditorium & Performance Hall |
| <b>03</b> INU CUBE  | <b>11</b> Welfare and Service Center (Student Cafeteria)   | <b>17</b> Student Community Center                         | <b>24</b> Observatory                   |
| <b>04</b> Computing & Information Center (BM Contents)                          | <b>12</b> Convention Center  | <b>18-1</b> Dormitory #1                                   | <b>25</b> Haedoongsil Kindergarten      |
| <b>05</b> College of Natural Sciences, College of Life Science & Bioengineering | <b>13</b> College of Social Sciences, School of Law, College of Commerce and Public Affairs                          | <b>18-2</b> Dormitory #2                                   | <b>26</b> Greenhouse                    |
| <b>06</b> Haksan Library  | <b>14</b> College of Business Administration, School of Northeast Asian Studies(SONAS), Graduate School of Logistics | <b>18-3</b> Dormitory #3                                   | <b>27</b> Joint Laboratory #2           |
| <b>06-1</b> Irum Hall   |  | <b>19</b> College of Liberal and Interdisciplinary Studies | <b>28</b> College of Urban Science      |
| <b>07</b> College of Information Technology                                     |  | <b>20</b> Sports Center, Golf Practice Center              | <b>29</b> Dept. of Bioengineering       |
| <b>08</b> College of Engineering, College of Urban Science                      |  | <b>21</b> Gym  | <b>41</b> BIO COMPLEX                   |